



# GAT MONTHLY MEMBERSHIP PROGRESS REPORT

Results as of: 5/31/2023

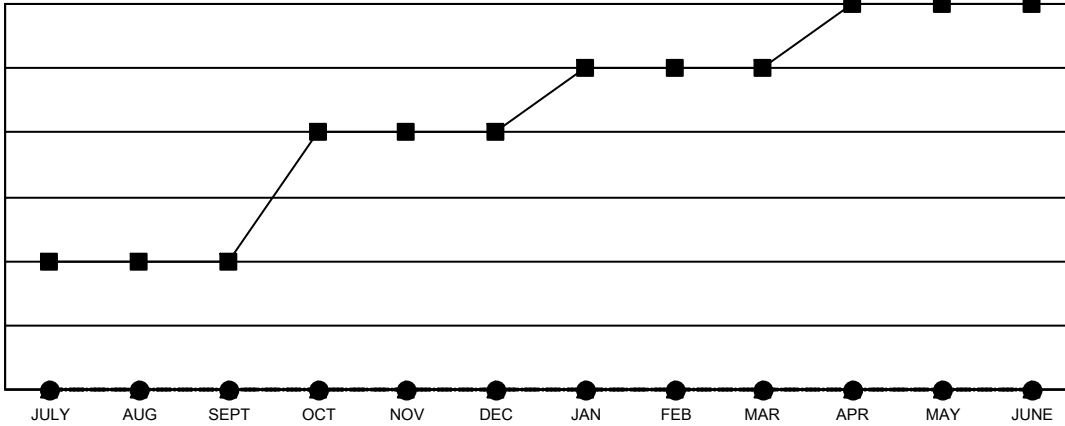
Multiple District 3

LOCATION: OKLAHOMA

Clubs			
RESULTS FOR 2022-2023			
QUARTER	NEW CLUB GOAL	NEW CLUBS	DROPPED CLUBS
JULY/AUG/SEPT	2	0	1
OCT/NOV/DEC	2	0	1
JAN/FEB/MAR	1	0	0
APR/MAY/JUNE	1	0	0

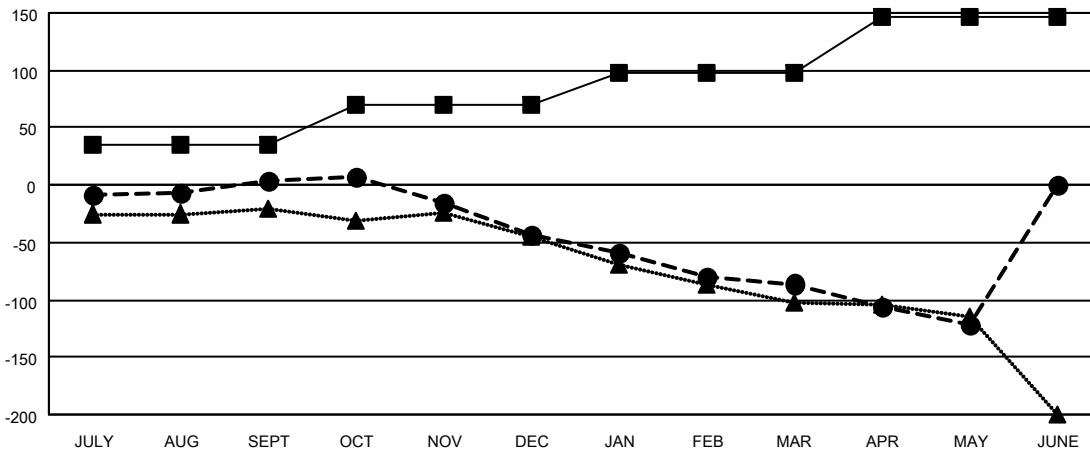
Members			
RESULTS FOR 2022-2023			
QUARTER	MEMBER GROWTH NET GOAL	MEMBER GROWTH ACTUAL	DROPPED MEMBERS ACTUAL (including transfers)
JULY/AUG/SEPT	35	100	88
OCT/NOV/DEC	35	63	104
JAN/FEB/MAR	28	57	80
APR/MAY/JUNE	48	40	73

GOALS AND ACTUAL NEW CLUBS CUMULATIVE



- CURRENT YEAR GOALS FOR NEW CLUBS
- CURRENT YEAR ACTUAL NEW CLUBS
- ▲- LAST YEAR ACTUAL NEW CLUBS

GOALS AND ACTUAL MEMBERS CUMULATIVE



- MEMBER GROWTH NET GOAL
- MEMBER GROWTH ACTUAL
- ▲- LAST YEAR MEMBERSHIP ACTUAL

<b>DROPPED CLUBS: 2</b>	<b>63 CLUBS OF 138 ADDED 1 OR MORE NEW MEMBERS</b>	<b>GENDER DISTRIBUTION</b>
<b>DROPPED MEMBERS</b>	<a href="#">CLICK HERE FOR CUMULATIVE MEMBERSHIP DATA</a>	MALE 1,962 (65.88%)
DECEASED 35		FEMALE 1,015 (34.08%)
CLUB CANCELLED 16		NON BINARY 0 (0.00%)
OTHER 294		PREFER NOT TO ANSWER 1 (0.03%)
<b>TOTAL 345</b>		<b>TOTAL FAMILY UNIT MEMBERS 430</b>
		<b>FAMILY MEMBERS PAYING HALF DUES 217</b>